



Trademarks & Remarks

- "SONY", "α" and "ALPHA" are trademarks of Sony Corporation.
- All other company and product names mentioned herein are used for identification purposes only and may be the trademarks or registered trademarks of their respective owners.

Sep. 2019

© 2019 Sony Corporation Printed in Japan

SONY

α9 α9Ⅱ

AF Setup Quick Guide



Introduction

This Quick Guide provides a number of sample AF setups that can help make the most of the advanced AF capabilities offered by the α9 series in a variety of situations.

- The settings given may not be suitable for all photographic situations.
- The content of this guide applies to camera software version 6.00 for α9 and version 1.00 for α9 II.
- The Menu setting and the body between α9 and α9 II differs. Menu settings and product images displayed in this Quick Guide apply mainly to α9 II.
- Specifications listed in this Quick Guide may change without notice in accordance with future updates and improvements.
- Photographs are provided to illustrate the situations described in this guide, not to serve as sample α9 or α9 II images.

Refer to the camera owner's manual or information provided on relevant Sony websites for operating details and specifications.

Product page: <http://www.sony.net/ilce-9>

<http://www.sony.net/ilce-9m2>

Help guide: http://helpguide.sony.net/ilc/1650/v1/h_zz/

https://rd1.sony.net/help/ilc/1960/h_zz/



Contents

Frequently used focus controls	p.4
Main focus settings	p.6
Recommended settings for events and subjects	pp.15-43
Recommended settings by scene type	pp.44-51
Custom settings	pp.52-57
Customizing the button settings	p.52
Recall Custom Setting During Hold	pp.53-54
My Menu	p.55
Customizing the Fn (Function) button	p.56
Customizing the Eye AF	p.57
Silent shutter	p.58

Frequently used focus controls

Top

- **Upper: Drive mode dial**
Single Shooting / Hi, Mid, Lo Cont.
Shooting / Self-timer / Bracket
- **Lower: Focus mode dial**
AF-S / AF-C / DMF / MF



- **Mode dial**
Intelligent Auto / P (Program Auto) / A (Aperture Priority)
/ S (Shutter Priority) / M (Manual Exposure) / 1/2/3
(Memory recall) / Movie / S&Q (Slow&Quick Motion)

Rear

- **MENU button**
Camera Settings /
Network / Playback /
Setup / My Menu

- **AF On button**
Focus without pressing
the shutter button
halfway down.



- **Multi-selector**
Move the focus area by pressing the multi-selector up / down / left / right.

Main focus settings

The recommended focus setups described on pages 15 through 43 include the following focus settings.

Focus Mode

Use this setting to select the focus mode that best suits the subject and subject motion.

Available Settings	AF-S (Single-shot AF) / AF-C (Continuous AF) / DMF (Direct Manual Focus) / MF (Manual Focus)
--------------------	--

Procedure	Rotate the Focus Mode dial
-----------	----------------------------



Note: Images on these pages show α9 II.

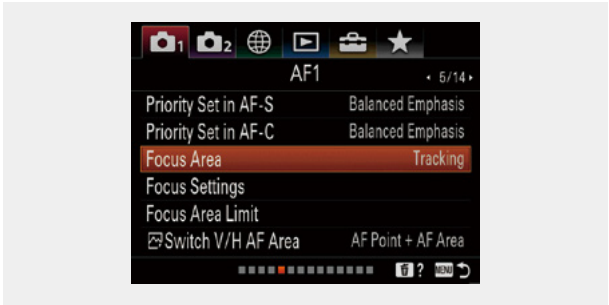
Focus Area

Selects the focus area.

Available Settings	Wide / Zone / Center / Flexible Spot: S, M, L / Expand Flexible Spot / Tracking: Wide, Zone, Center, Flexible Spot S, M, L, Expand Flexible Spot
--------------------	--

Procedure	MENU button - [1] 5 / 14 (AF1) - [Focus Area]
-----------	--

Assignable to Custom key (Shoot.) (Fn) ★ (My Menu)



Focus Area - Real-time Tracking

Select the Focus Area. It determines the initial Focus Area while using the Tracking Mode. The selected tracking area is activated by half-pressing the shutter button. The subject is tracked over the full screen while the Tracking function is activated.

Available Settings	Tracking: Wide, Zone, Center, Flexible Spot S, M, L, Expand Flexible Spot
Procedure	MENU button - [1] 5 / 14 (AF1) - [Focus Area] - Tracking

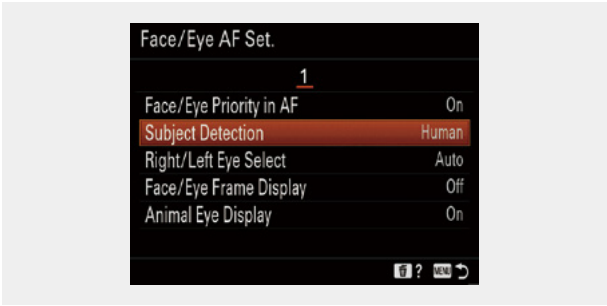


Real-time Eye AF - Subject Detection

Select the subject from Human and Animal.* The Eye AF function is activated within the selected focus area by half-pressing the shutter button or pressing the AF-ON button.**

Available Settings	Human / Animal
Procedure	MENU button - [1] 6 / 14 (AF2) - [Face / Eye AF Set.] - Subject Detection

Assignable to ★ (My Menu)






* Only one subject can be selected and the other subject cannot be selected.

** Only activates when a face is detected withing the Focus Area selected.

Real-time Eye AF - Right/Left Eye Selection

Select the Eye from Right and Left.


Available Settings	Right/Left
Procedure	MENU button - [ 1] 6 / 14 (AF2) - [Face/Eye AF Set.] - Right/Left Eye Select

Assignable to Custom key (Shoot.)  (Fn)  (My Menu)



Priority Set in AF-C

Determines whether the shutter will release if the subject is not in focus when continuous AF is activated and the subject is in motion.


Available Settings	AF / Release / Balanced Emphasis
Procedure	MENU button - [ 1] 5 / 14 (AF1) - [Priority Set in AF-C]


Assignable to  (My Menu)



AF Tracking Sensitivity

Selects the AF tracking sensitivity that applies when the subject goes out of focus while shooting still images.


Available Settings	5 (Responsive) / 4 / 3 (Standard) / 2 / 1 (Locked on)
Procedure	MENU button - [ 1] 6 / 14 (AF2) - [AF Tracking Sens.]

Assignable to  ★ (My Menu)

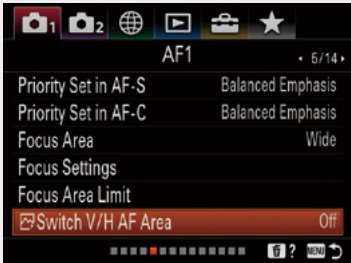


Match focus area to camera orientation

Determines whether the focus area and position of the focusing frame will be adjusted according to match horizontal/vertical camera orientation.

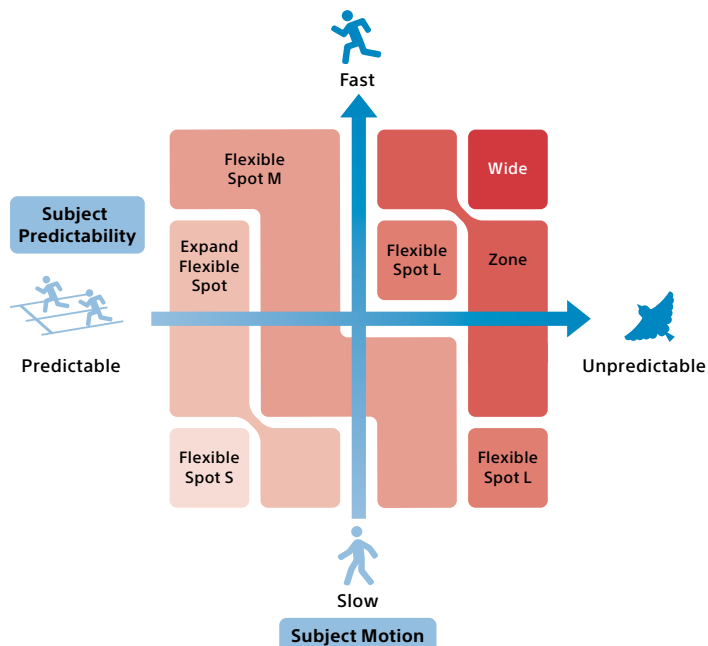
Available Settings	Off / AF Point Only / AF Point + AF Area
Procedure	MENU button - [ 1] 5 / 14 (AF1) - [Switch V/H AF Area]

Assignable to ★ (My Menu)



AF area and subject motion

Select a narrow AF area mode for subjects that move slowly or predictably. A wide AF area is recommended for subjects that move rapidly and/or unpredictably.



Note: Tracking Mode is suitable for tracking single subjects continuously, and when obstacles might briefly obscure the subject.

Index



Ball games 1-5

pp.16-20



Athletics / Track and field 1-2

p.21-22



Winter sports 1-5

pp.23-27



Motor sports 1-2

pp.28-29



Water sports

p.30



Other sports 1-10

pp.31-39

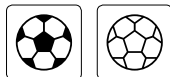


Non-sport categories 1-4

pp.40-43

Refer to the following webpage for conditions that may apply during continuous shooting
 : <http://www.sony.net/cont/ilce9/>
 : <https://www.sony.net/dics/9m2cnt/>

Ball games 1



Soccer / Football, Futsal, Handball



Item	Recommended settings	Use
Focus Mode	AF-C	Focus Mode Dial
Focus Area	[No.1] Flexible Spot M [No.2] Expand Flexible Spot	[1] 5 / 14 (AF1)
Face/Eye Priority in AF	On	[1] 6 / 14 (AF2)
Subject Detection	Human	[1] 6 / 14 (AF2)
Priority Set in AF-C	Balanced Emphasis	[1] 5 / 14 (AF1)
AF Track Sens.	4*	[1] 6 / 14 (AF2)
Switch V/H AF Area	AF point only	[1] 5 / 14 (AF1)

* Set AF sensitivity to 4 in situations where the ball is frequently passed between players.

Ball games 2



Basketball, Volleyball



Item	Recommended settings	Use
Focus Mode	AF-C	Focus Mode Dial
Focus Area	[No.1] Flexible Spot M* [No.2] Expand Flexible Spot**	[1] 5 / 14 (AF1)
Face/Eye Priority in AF	On	[1] 6 / 14 (AF2)
Subject Detection	Human	[1] 6 / 14 (AF2)
Priority Set in AF-C	Balanced Emphasis	[1] 5 / 14 (AF1)
AF Track Sens.	3 (Standard)	[1] 6 / 14 (AF2)
Switch V/H AF Area	AF point only	[1] 5 / 14 (AF1)

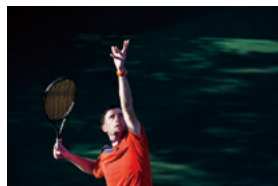
* Recommended when the players are close together.

** Recommended when the players are far apart or multiple players are close to each other.

Ball games 3



Tennis



Item	Recommended settings	Use
Focus Mode	AF-C	Focus Mode Dial
Focus Area	[No.1] Flexible Spot M* [No.2] Expand Flexible Spot** [No.3] Tracking: Flexible Spot M***	[1] 5 / 14 (AF1)
Face/Eye Priority in AF	On	[1] 6 / 14 (AF2)
Subject Detection	Human	[1] 6 / 14 (AF2)
Priority Set in AF-C	Balanced Emphasis	[1] 5 / 14 (AF1)
AF Track Sens.	3 (Standard)	[1] 6 / 14 (AF2)
Switch V/H AF Area	AF point only	[1] 5 / 14 (AF1)

* Covers a wide range of situations.

** Recommended for pinpoint focus on a selected player.

*** Recommended when shooting the upper body of the player or when the player rapidly moves sideways.

Ball games 4



Rugby



Item	Recommended settings	Use
Focus Mode	AF-C	Focus Mode Dial
Focus Area	[No.1] Expand Flexible Spot* [No.2] Flexible Spot M**	[1] 5 / 14 (AF1)
Face/Eye Priority in AF	On	[1] 6 / 14 (AF2)
Subject Detection	Human	[1] 6 / 14 (AF2)
Priority Set in AF-C	Balanced Emphasis	[1] 5 / 14 (AF1)
AF Track Sens.	3 (Standard)	[1] 6 / 14 (AF2)
Switch V/H AF Area	AF point only	[1] 5 / 14 (AF1)

* Covers a wide range of situations.

** Recommended for pinpoint focus on a selected player.

Ball games 5



American football



Item	Recommended settings	Use
Focus Mode	AF-C	Focus Mode Dial
Focus Area	[No.1] Expand Flexible Spot* [No.2] Flexible Spot M	[1] 5 / 14 (AF1)
Face/Eye Priority in AF	Off	[1] 6 / 14 (AF2)
Subject Detection	-	-
Priority Set in AF-C	Balanced Emphasis	[1] 5 / 14 (AF1)
AF Track Sens.	2**	[1] 6 / 14 (AF2)
Switch V/H AF Area	AF point only	[1] 5 / 14 (AF1)

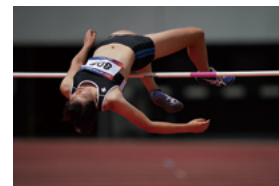
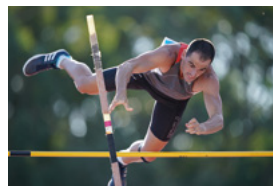
* Recommended for pinpoint focus on a selected player.

** Set sensitivity to 2 for stable tracking when players are colliding and moving chaotically.

Athletics / Track and field 1



High jump, Pole vault



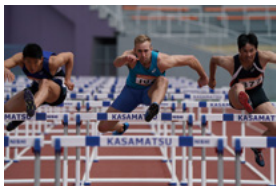
Item	Recommended settings	Use
Focus Mode	AF-C	Focus Mode Dial
Focus Area	[No.1] Flexible Spot M [No.2] Expand Flexible Spot*	[1] 5 / 14 (AF1)
Face/Eye Priority in AF	Off	[1] 6 / 14 (AF2)
Subject Detection	-	-
Priority Set in AF-C	Balanced Emphasis	[1] 5 / 14 (AF1)
AF Track Sens.	3 (Standard)	[1] 6 / 14 (AF2)
Switch V/H AF Area	AF point only	[1] 5 / 14 (AF1)

* Recommended for pinpoint focus on a selected player.

Athletics / Track and field 2



Sprints (100m~), Hurdles, Javelin, Shot put, Long jump,
Triple jump, Marathon



Item	Recommended settings	Use
Focus Mode	AF-C	Focus Mode Dial
Focus Area	[No.1] Flexible Spot M* [No.2] Expand Flexible Spot* [No.3] Tracking: Flexible Spot M**	[CAMERA] 5 / 14 (AF1)
Face/Eye Priority in AF	On	[CAMERA] 6 / 14 (AF2)
Subject Detection	Human	[CAMERA] 6 / 14 (AF2)
Priority Set in AF-C	Balanced Emphasis	[CAMERA] 5 / 14 (AF1)
AF Track Sens.	3 (Standard)	[CAMERA] 6 / 14 (AF2)
Switch V/H AF Area	AF point only	[CAMERA] 5 / 14 (AF1)

* For stable tracking.

** Recommended when continuously tracking a single player.

Winter sports 1



Alpine skiing (near a gate, jump), Mogul, Snowboarding
(Half-pipe slalom), Ski jumping (front, side), Biathlon,
Short-track speed skating, Bobsleigh



Item	Recommended settings	Use
Focus Mode	AF-C	Focus Mode Dial
Focus Area	[No.1] Flexible Spot M* [No.2] Expand Flexible Spot* [No.3] Tracking: Flexible Spot M**	[CAMERA] 5 / 14 (AF1)
Face/Eye Priority in AF	On	[CAMERA] 6 / 14 (AF2)
Subject Detection	Human	[CAMERA] 6 / 14 (AF2)
Priority Set in AF-C	Balanced Emphasis	[CAMERA] 5 / 14 (AF1)
AF Track Sens.	3 (Standard)	[CAMERA] 6 / 14 (AF2)
Switch V/H AF Area	AF point only	[CAMERA] 5 / 14 (AF1)

* For stable tracking.

** Recommended when continuously tracking a single player.

Winter sports 2



Speed skating



Item	Recommended settings	Use
Focus Mode	AF-C	Focus Mode Dial
Focus Area	[No.1] Flexible Spot M* [No.2] Zone* [No.3] Tracking: Flexible Spot M**	[1] 5 / 14 (AF1)
Face/Eye Priority in AF	On***	[1] 6 / 14 (AF2)
Subject Detection	Human	[1] 6 / 14 (AF2)
Priority Set in AF-C	Balanced Emphasis	[1] 5 / 14 (AF1)
AF Track Sens.	3 (Standard)	[1] 6 / 14 (AF2)
Switch V/H AF Area	AF point only	[1] 5 / 14 (AF1)

* For stable tracking.

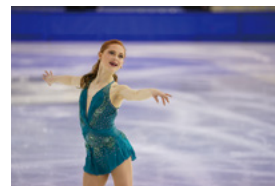
** Recommended when continuously tracking a single player.

*** For accurate face tracking. Eye detection might be difficult when subjects are wearing sunglasses.

Winter sports 3



Figure skating (Singles, Pairs)



Item	Recommended settings	Use
Focus Mode	AF-C	Focus Mode Dial
Focus Area	[No.1] Tracking: Flexible Spot M* [No.2] Flexible Spot M [No.3] Zone**	[1] 5 / 14 (AF1)
Face/Eye Priority in AF	On**	[1] 6 / 14 (AF2)
Subject Detection	Human	[1] 6 / 14 (AF2)
Priority Set in AF-C	Balanced Emphasis	[1] 5 / 14 (AF1)
AF Track Sens.	3 (Standard)	[1] 6 / 14 (AF2)
Switch V/H AF Area	AF point only	[1] 5 / 14 (AF1)

* Recommended when continuously tracking a single player.

** For accurate face tracking.

Winter sports 4



Ice hockey



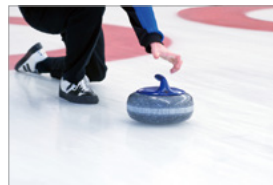
Item	Recommended settings	Use
Focus Mode	AF-C	Focus Mode Dial
Focus Area	[No.1] Flexible Spot M [No.2] Expand Flexible Spot	[1] 5 / 14 (AF1)
Face/Eye Priority in AF	Off	[1] 6 / 14 (AF2)
Subject Detection	-	-
Priority Set in AF-C	Balanced Emphasis	[1] 5 / 14 (AF1)
AF Track Sens.	4*	[1] 6 / 14 (AF2)
Switch V/H AF Area	AF point only	[1] 5 / 14 (AF1)

* Set AF sensitivity to 4 when the puck is frequently being passed between players.

Winter sports 5



Curling



Item	Recommended settings	Use
Focus Mode	AF-C	Focus Mode Dial
Focus Area	[No.1] Tracking: Flexible Spot M* [No.2] Flexible Spot M [No.3] Expand Flexible Spot	[1] 5 / 14 (AF1)
Face/Eye Priority in AF	On**	[1] 6 / 14 (AF2)
Subject Detection	Human	[1] 6 / 14 (AF2)
Priority Set in AF-C	Balanced Emphasis	[1] 5 / 14 (AF1)
AF Track Sens.	2	[1] 6 / 14 (AF2)
Switch V/H AF Area	AF point only	[1] 5 / 14 (AF1)

* Recommended when continuously tracking a single player.

** For accurate face tracking.

Motor sports 1



Car racing, Karting, Motorcycling (on-road)



Item	Recommended settings	Use
Focus Mode	AF-C	Focus Mode Dial
Focus Area	[No.1] Flexible Spot M* [No.2] Expand Flexible Spot* [No.3] Tracking: Flexible Spot M**	[1] 5 / 14 (AF1)
Face/Eye Priority in AF	Off	[1] 6 / 14 (AF2)
Subject Detection	-	-
Priority Set in AF-C	Balanced Emphasis	[1] 5 / 14 (AF1)
AF Track Sens.	3 (Standard)	[1] 6 / 14 (AF2)
Switch V/H AF Area	AF point only	[1] 5 / 14 (AF1)

* For stable tracking.

** Recommended when continuously tracking a single driver.

Motor sports 2



Motocross



Item	Recommended settings	Use
Focus Mode	AF-C	Focus Mode Dial
Focus Area	[No.1] Flexible Spot M* [No.2] Wide** [No.3] Tracking: Wide***	[1] 5 / 14 (AF1)
Face/Eye Priority in AF	Off	[1] 6 / 14 (AF2)
Subject Detection	-	-
Priority Set in AF-C	Balanced Emphasis	[1] 5 / 14 (AF1)
AF Track Sens.	3 (Standard)	[1] 6 / 14 (AF2)
Switch V/H AF Area	AF point only	[1] 5 / 14 (AF1)

* Recommended when the driver is on the road.

** Recommended for flexible framing.

*** Recommended for dynamic jump scenes.

Water sports



Swimming



Item	Recommended settings	Use
Focus Mode	AF-C	Focus Mode Dial
Focus Area	[No.1] Expand Flexible Spot [No.2] Flexible Spot M	[1] 5 / 14 (AF1)
Face/Eye Priority in AF	On**	[1] 6 / 14 (AF2)
Subject Detection	Human	[1] 6 / 14 (AF2)
Priority Set in AF-C	Balanced Emphasis	[1] 5 / 14 (AF1)
AF Track Sens.	1 (Locked on) ~ 2 *	[1] 6 / 14 (AF2)
Switch V/H AF Area	AF point only	[1] 5 / 14 (AF1)

* A lower sensitivity setting is recommended when tracking a frequently submerged swimmer.

** Eye detection might be difficult when subjects are wearing goggles.

Other sports 1



Cycling



Item	Recommended settings	Use
Focus Mode	AF-C	Focus Mode Dial
Focus Area	[No.1] Flexible Spot M* [No.2] Expand Flexible Spot** [No.3] Tracking: Flexible Spot M	[1] 5 / 14 (AF1)
Face/Eye Priority in AF	On***	[1] 6 / 14 (AF2)
Subject Detection	Human	[1] 6 / 14 (AF2)
Priority Set in AF-C	Balanced Emphasis	[1] 5 / 14 (AF1)
AF Track Sens.	3 (Standard)	[1] 6 / 14 (AF2)
Switch V/H AF Area	AF point only	[1] 5 / 14 (AF1)

* For stable tracking.

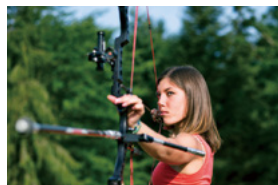
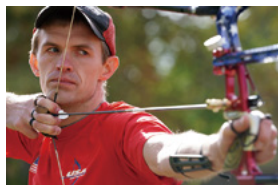
** Recommended when continuously tracking a single rider.

*** For accurate face tracking.

Other sports 2



Archery, Horse racing, Sepak takraw



Item	Recommended settings	Use
Focus Mode	AF-C	Focus Mode Dial
Focus Area	[No.1] Tracking: Flexible Spot M* [No.2] Flexible Spot M [No.3] Expand Flexible Spot	[1] 5 / 14 (AF1)
Face/Eye Priority in AF	On**	[1] 6 / 14 (AF2)
Subject Detection	Human	[1] 6 / 14 (AF2)
Priority Set in AF-C	Balanced Emphasis	[1] 5 / 14 (AF1)
AF Track Sens.	3 (Standard)	[1] 6 / 14 (AF2)
Switch V/H AF Area	AF point only	[1] 5 / 14 (AF1)

* Recommended when continuously tracking a single player.

** For accurate face tracking.

Other sports 3



Speedboat racing



Item	Recommended settings	Use
Focus Mode	AF-C	Focus Mode Dial
Focus Area	[No.1] Tracking: Flexible Spot M* [No.2] Flexible Spot M** [No.3] Expand Flexible Spot**	[1] 5 / 14 (AF1)
Face/Eye Priority in AF	Off	[1] 6 / 14 (AF2)
Subject Detection	-	-
Priority Set in AF-C	Balanced Emphasis	[1] 5 / 14 (AF1)
AF Track Sens.	3 (Standard)	[1] 6 / 14 (AF2)
Switch V/H AF Area	AF point only	[1] 5 / 14 (AF1)

* Recommended when continuously tracking a single driver.

** Recommended at the beginning of the race when drivers frequently change positions.

Other sports 4



Canoeing, Equestrian events



Item	Recommended settings	Use
Focus Mode	AF-C	Focus Mode Dial
Focus Area	[No.1] Flexible Spot M* [No.2] Expand Flexible Spot [No.3] Tracking: Flexible Spot M**	[1] 5 / 14 (AF1)
Face/Eye Priority in AF	On	[1] 6 / 14 (AF2)
Subject Detection	Human	[1] 6 / 14 (AF2)
Priority Set in AF-C	Balanced Emphasis	[1] 5 / 14 (AF1)
AF Track Sens.	2***	[1] 6 / 14 (AF2)
Switch V/H AF Area	AF point only	[1] 5 / 14 (AF1)

* For stable tracking.

** Recommended when continuously tracking a single player.

*** Reduce sensitivity as required to avoid interference from obstacles.

Other sports 5



Judo



Item	Recommended settings	Use
Focus Mode	AF-C	Focus Mode Dial
Focus Area	[No.1] Flexible Spot M* [No.2] Expand Flexible Spot	[1] 5 / 14 (AF1)
Face/Eye Priority in AF	On	[1] 6 / 14 (AF2)
Subject Detection	Human	[1] 6 / 14 (AF2)
Priority Set in AF-C	Balanced Emphasis	[1] 5 / 14 (AF1)
AF Track Sens.	3	[1] 6 / 14 (AF2)
Switch V/H AF Area	AF point only	[1] 5 / 14 (AF1)

* Covers a wide range of situations.

Other sports 6



Kendo



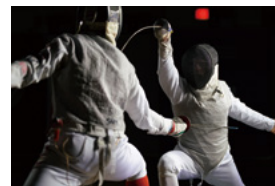
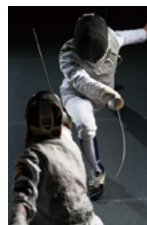
Item	Recommended settings	Use
Focus Mode	AF-C	Focus Mode Dial
Focus Area	[No.1] Flexible Spot M* [No.2] Expand Flexible Spot	[1] 5 / 14 (AF1)
Face/Eye Priority in AF	Off	[1] 6 / 14 (AF2)
Subject Detection	-	-
Priority Set in AF-C	Balanced Emphasis	[1] 5 / 14 (AF1)
AF Track Sens.	3 (Standard)	[1] 6 / 14 (AF2)
Switch V/H AF Area	AF point only	[1] 5 / 14 (AF1)

* Covers a wide range of situations.

Other sports 7



Fencing



Item	Recommended settings	Use
Focus Mode	AF-C	Focus Mode Dial
Focus Area	[No.1] Flexible Spot M* [No.2] Expand Flexible Spot** [No.3] Tracking: Flexible Spot M	[1] 5 / 14 (AF1)
Face/Eye Priority in AF	Off	[1] 6 / 14 (AF2)
Subject Detection	-	-
Priority Set in AF-C	Balanced Emphasis	[1] 5 / 14 (AF1)
AF Track Sens.	3 (Standard)	[1] 6 / 14 (AF2)
Switch V/H AF Area	AF point only	[1] 5 / 14 (AF1)

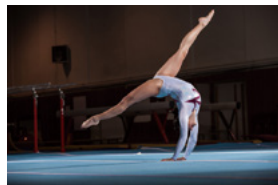
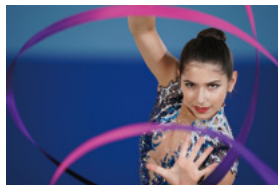
* For stable tracking.

** Recommended when continuously tracking a single player.

Other sports 8



Gymnastics, Rhythmic sportive gymnastics



Item	Recommended settings	Use
Focus Mode	AF-C	Focus Mode Dial
Focus Area	[No.1] Tracking: Flexible Spot M* [No.2] Flexible Spot M** [No.3] Expand Flexible Spot**	[1] 5 / 14 (AF1)
Face/Eye Priority in AF	On***	[1] 6 / 14 (AF2)
Subject Detection	Human	[1] 6 / 14 (AF2)
Priority Set in AF-C	Balanced Emphasis	[1] 5 / 14 (AF1)
AF Track Sens.	3 (Standard)	[1] 6 / 14 (AF2)
Switch V/H AF Area	AF point only	[1] 5 / 14 (AF1)

* Recommended when continuously tracking a single player.

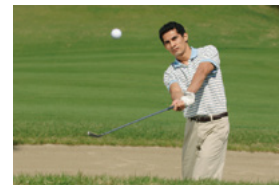
** Recommended when changing subjects.

*** For accurate face tracking.

Other sports 9



Golf



Item	Recommended settings	Use
Focus Mode	AF-C	Focus Mode Dial
Focus Area	[No.1] Tracking: Flexible Spot M* [No.2] Flexible Spot M** [No.3] Expand Flexible Spot**	[1] 5 / 14 (AF1)
Face/Eye Priority in AF	On	[1] 6 / 14 (AF2)
Subject Detection	Human	[1] 6 / 14 (AF2)
Priority Set in AF-C	Balanced Emphasis	[1] 5 / 14 (AF1)
AF Track Sens.	2	[1] 6 / 14 (AF2)
Switch V/H AF Area	AF point only	[1] 5 / 14 (AF1)

* Recommended when continuously tracking a single player.

** For accurate face tracking.

Non-sport categories 1



Trains and other railed vehicles



Item	Recommended settings	Use
Focus Mode	AF-C	Focus Mode Dial
Focus Area	[No.1] Tracking: Flexible Spot M* [No.2] Flexible Spot M** [No.3] Expand Flexible Spot	[CAMERA] 5 / 14 (AF1)
Face/Eye Priority in AF	Off	[CAMERA] 6 / 14 (AF2)
Subject Detection	-	-
Priority Set in AF-C	Balanced Emphasis	[CAMERA] 5 / 14 (AF1)
AF Track Sens.	3 (Standard)	[CAMERA] 6 / 14 (AF2)
Switch V/H AF Area	AF point only	[CAMERA] 5 / 14 (AF1)

* Recommended when continuously tracking a single subject.

** Covers a wide range of situations.

Non-sport categories 2



Wild birds



Item	Recommended settings	Use
Focus Mode	AF-C	Focus Mode Dial
Focus Area	[No.1] Flexible Spot M* [No.2] Expand Flexible Spot [No.3] Tracking: Wide**	[CAMERA] 5 / 14 (AF1)
Face/Eye Priority in AF	Off	[CAMERA] 6 / 14 (AF2)
Subject Detection	-	-
Priority Set in AF-C	Balanced Emphasis	[CAMERA] 5 / 14 (AF1)
AF Track Sens.	3 (Standard)	[CAMERA] 6 / 14 (AF2)
Switch V/H AF Area	AF point only	[CAMERA] 5 / 14 (AF1)

* Covers a wide range of situations.

** Recommended when continuously tracking a single subject.

Non-sport categories 3



Airplanes, Air shows



Item	Recommended settings	Use
Focus Mode	AF-C	Focus Mode Dial
Focus Area	[No.1] Tracking: Flexible Spot M* [No.2] Flexible Spot M** [No.3] Zone	[CAMERA] 5 / 14 (AF1)
Face/Eye Priority in AF	Off	[CAMERA] 6 / 14 (AF2)
Subject Detection	-	-
Priority Set in AF-C	Balanced Emphasis	[CAMERA] 5 / 14 (AF1)
AF Track Sens.	3 (Standard)	[CAMERA] 6 / 14 (AF2)
Switch V/H AF Area	AF point only	[CAMERA] 5 / 14 (AF1)

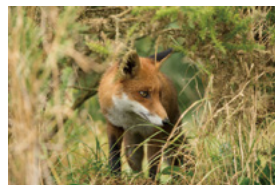
* Recommended when continuously tracking a single subject.

** To focus on a specific aircraft.

Non-sport categories 4



Wild animals



Item	Recommended settings	Use
Focus Mode	AF-C	Focus Mode Dial
Focus Area	[No.1] Flexible Spot M* [No.2] Expand Flexible Spot [No.3] Tracking: Flexible Spot M**	[CAMERA] 5 / 14 (AF1)
Face/Eye Priority in AF	On	[CAMERA] 6 / 14 (AF2)
Subject Detection	Animal	[CAMERA] 6 / 14 (AF2)
Priority Set in AF-C	Balanced Emphasis	[CAMERA] 5 / 14 (AF1)
AF Track Sens.	2***	[CAMERA] 6 / 14 (AF2)
Switch V/H AF Area	AF point only	[CAMERA] 5 / 14 (AF1)

* For stable tracking.

** Recommended when continuously tracking a single subject.

*** A low AF sensitivity of 2 can minimize interference from grass and branches.

Index

Scene type 1

p.45

General AF setup for a wide range of moving subjects in common situations.

Scene type 2

p.46

For accurate subject tracking in situations where obstacles might briefly obscure the subject.

Scene type 3

p.47

Switch smoothly between different subjects while shooting.

Scene type 4

p.48

For accurate subject tracking in situations where a single subject is needed to be continuously tracked.

Scene type 5

p.49

For fast or erratic subjects that move in unpredictable ways.

Scene type 6

p.50

Take advantage of a wide AF area for maximum framing and composition freedom.

Scene type 7

p.51

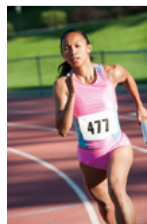
Shoot silently.

Refer to the following webpage for conditions that may apply during continuous shooting
: <http://www.sony.net/cont/ilce9/>
: <https://www.sony.net/dics/9m2cnt/>

Scene type 1

General AF setup for a wide range of moving subjects in common situations.

These settings can provide optimum focus performance for a wide range of moving subjects in common situations if the subject is relatively large and moves in a somewhat predictable manner.



Item	Recommended settings	Use
Focus Mode	AF-C	Focus Mode Dial
Focus Area	Flexible Spot M	[] 5 / 14 (AF1)
Face/Eye Priority in AF	On	[] 6 / 14 (AF2)
Subject Detection	Human	[] 6 / 14 (AF2)
Priority Set in AF-C	Balanced Emphasis	[] 5 / 14 (AF1)
AF Track Sens.	3 (Standard)	[] 6 / 14 (AF2)
Drive Mode	Hi	Drive Mode Dial
Shutter Type	Auto / Electronic Shut.	[] 5 / 11 (Shutter/SteadyShot)
Shutter Speed	1 / 1600 or higher	Rear / Front dial

Scene type 2

For accurate subject tracking in situations where obstacles might briefly obscure the subject.

An AF Tracking Sensitivity setting of 2 can help to maintain pinpoint focus on a rapidly or erratically moving main subject by preventing focus from shifting to obstacles that might occasionally come between the subject and camera.



Item	Recommended settings	Use
Focus Mode	AF-C	Focus Mode Dial
Focus Area	Expand Flexible Spot	[1] 5 / 14 (AF1)
Face/Eye Priority in AF	Off	[1] 6 / 14 (AF2)
Subject Detection	-	-
Priority Set in AF-C	Balanced Emphasis	[1] 5 / 14 (AF1)
AF Track Sens.	2	[1] 6 / 14 (AF2)
Drive Mode	Hi	Drive Mode Dial
Shutter Type	Auto / Electronic Shut.	[2] 5 / 11 (Shutter/SteadyShot)
Shutter Speed	1 / 1600 or higher	Rear / Front dial

Scene type 3

Switch smoothly between different subjects while shooting.

An AF Tracking Sensitivity setting of 4 can make it easier to repeatedly switch framing and focus from one moving subject to another while shooting.

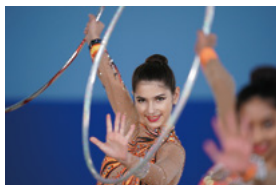


Item	Recommended settings	Use
Focus Mode	AF-C	Focus Mode Dial
Focus Area	Flexible Spot M	[1] 5 / 14 (AF1)
Face/Eye Priority in AF	Off	[1] 6 / 14 (AF2)
Subject Detection	-	-
Priority Set in AF-C	Balanced Emphasis	[1] 5 / 14 (AF1)
AF Track Sens.	4	[1] 6 / 14 (AF2)
Drive Mode	Hi	Drive Mode Dial
Shutter Type	Auto / Electronic Shut.	[2] 5 / 11 (Shutter/SteadyShot)
Shutter Speed	1 / 1600 or higher	Rear / Front dial

Scene type 4

For accurate subject tracking in situations where a single subject needs to be continuously tracked.

The Tracking mode helps to maintain focus on a specific subject continuously by preventing focus from shifting even when subjects are moving.

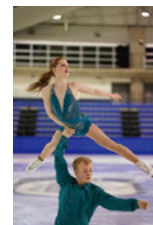


Item	Recommended settings	Use
Focus Mode	AF-C	Focus Mode Dial
Focus Area	Tracking : Flexible Spot M	[] 5 / 14 (AF1)
Face/Eye Priority in AF	On	[] 6 / 14 (AF2)
Subject Detection	Human	[] 6 / 14 (AF2)
Priority Set in AF-C	Balanced Emphasis	[] 5 / 14 (AF1)
AF Track Sens.	2	[] 6 / 14 (AF2)
Drive Mode	Hi	Drive Mode Dial
Shutter Type	Auto / Electronic Shut.	[] 5 / 11 (Shutter/SteadyShot)
Shutter Speed	1 / 1600 or higher	Rear / Front dial

Scene type 5

For fast or erratic subjects that move in unpredictable ways.

Set the Focus Area to Zone when shooting fast-moving subjects at close range, or when shooting subjects that move unpredictably, to maximize framing freedom.



Item	Recommended settings	Use
Focus Mode	AF-C	Focus Mode Dial
Focus Area	Zone	[] 5 / 14 (AF1)
Face/Eye Priority in AF	Off	[] 6 / 14 (AF2)
Subject Detection	-	-
Priority Set in AF-C	Balanced Emphasis	[] 5 / 14 (AF1)
AF Track Sens.	3 (Standard)	[] 6 / 14 (AF2)
Drive Mode	Hi	Drive Mode Dial
Shutter Type	Auto / Electronic Shut.	[] 5 / 11 (Shutter/SteadyShot)
Shutter Speed	1 / 1600 or higher	Rear / Front dial

Scene type 6

Take advantage of a wide AF area for maximum framing and composition freedom.

Set the Focus Area to Wide when you need maximum freedom to create a variety of different compositions using the entire frame.



Item	Recommended settings	Use
Focus Mode	AF-C	Focus Mode Dial
Focus Area	Wide	[1] 5 / 14 (AF1)
Face/Eye Priority in AF	Off	[1] 6 / 14 (AF2)
Subject Detection	-	-
Priority Set in AF-C	Balanced Emphasis	[1] 5 / 14 (AF1)
AF Track Sens.	3 (Standard) ~ 4	[1] 6 / 14 (AF2)
Drive Mode	Hi	Drive Mode Dial
Shutter Type	Auto / Electronic Shut.	[2] 5 / 11 (Shutter/SteadyShot)
Shutter Speed	1 / 1600 or higher	Rear / Front dial

Scene type 7

Shoot silently.

An ideal setup for situations where you need to shoot silently and/or without vibration.



Item	Recommended settings	Use
Focus Mode	AF-C	Focus Mode Dial
Focus Area	Flexible Spot M	[1] 5 / 14 (AF1)
Face/Eye Priority in AF	Off	[1] 6 / 14 (AF2)
Subject Detection	-	-
Priority Set in AF-C	Balanced Emphasis	[1] 5 / 14 (AF1)
AF Track Sens.	3 (Standard)	[1] 6 / 14 (AF2)
Drive Mode	Hi	Drive Mode Dial
Shutter Type	Auto / Electronic Shut.	[2] 5 / 11 (Shutter/SteadyShot)
Shutter Speed	1 / 1600 or higher	Rear / Front dial

Customizing the button settings

Assign a desired function to a desired button.

■ Assignable buttons

C1, C2, C3, C4, Multi-selector center button, Center button, AEL, AF-ON, Right button, Left button, Down button, Focus hold button, Fn button, Control wheel



■ Available items

File Format	Face/Eye Frame Disp. Sel.	DRO/Auto HDR	Live View Disp. Select
JPEG Quality	AF Tracking Sens.	Creative Style	Bright Monitoring
JPEG Image Size	Aperture Drive in AF	Picture Effect	My Dial 1 during Hold
Aspect Ratio	AF On	Focus Magnifier	My Dial 2 during Hold
APS-C S35 / Full Frame Select	Focus Hold	Peaking Display Select	My Dial 3 during Hold
Drive Mode	Exposure Comp.	Peaking Level	My Dial 1 2 3
Self-timer during Bracket	ISO	Peaking Colour	Toggle My Dial 1
Interval Shooting	ISO AUTO Min SS	Anti-flicker Shoot.	Toggle My Dial 2
Memory	Metering Mode	In Camera Guide	Toggle My Dial 3
Recall Custom hold 1	Face Priority in Multi Metering	MOVIE	Audio signal
Recall Custom hold 2	AEL hold	S&Q Frame Rate	Send to Smartphone
Recall Custom hold 3	AEL toggle	Audio Rec Level	FTP Transfer
AF/MF Controld Hold	Spot AEL hold	Audio Level Display	Playback
AF/MF Ctrl Toggle	Spot AEL toggle	Marker Disp. Sel.	Monitor Brightness
Focus Standard	Flash Mode	Shutter Type	Touch Operation Select
Focus Area	Flash Comp.	ShteadyShot	TC/UB Disp. Switch
Switch Focus Area	Wireless Flash	SteadyShot Adjust.	Prioritise Rec. Media
Focus Setting	Wireless Test Flash	SteadyS. Focal Len.	MENU
Regist. AF Area hold	FEL Lock hold	Zoom	Display My Menu
Regist AF Area toggle	FEL Lock toggle	Aperture Preview	Not Set
Reg. AF Area + AF On	FEL Lock/AEL hold	Shot. Result Preview	Move AF Point: L/R
Tracking On	FEL Lock/AEL toggle	Finder/Monitor Sel.	Move AF Point: U/D
Face/Eye Priority in AF	White Balance	Finder Frame Rate	Aperture
Eye AF	Priority Set in AWB	Zebra Display Select	Shutter Speed
Subject Detection	AWB Lock Hold	Zebra Level	Exposure Comp.
Switch Right/Left Eye	AWB Lock Toggle	Grid Line	White Balance (C.Temp.)

= cannot be assigned to Multi-Slc Center Btn / Center button
 = cannot be assigned to Left / Right / Down button
 = can only be assigned to Control wheel

Recall Custom Setting During Hold

Register shooting settings to a custom button in advance for temporary recall while the button is held.

■ Assignable buttons

C1, C2, C3, C4, Multi-selector center button, Center button, AEL, AF-ON, Focus hold button



■ Available settings

Available items	Available settings
Shoot mode	P, A, S, M
Aperture	F1 ~ 90
Shutter speed	BULB ~ 1 / 16000
Drive mode	ALL other than Self-timer
Exposure compensation	-5.0 ~ +5.0
ISO	AUTO, 50 ~ 204800
Metering mode	ALL
Focus mode	ALL
Focus area	ALL, Registered Focus Area
AF Tracking Sensibility	1 ~ 5
AF on	AF on

Continued to next page.

Recall Custom Setting During Hold (Continued)

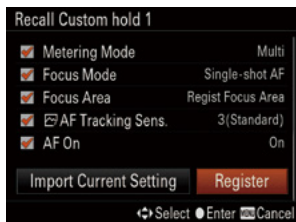
■ Procedure



- MENU button - [2] 9 / 11
→ [Custom Key]



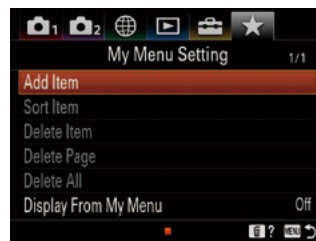
- Select the desired button from [Custom Key], then select from [Recall Custom hold 1] to [Recall Custom hold 3] on [Custom button 1] 2 / 26 (Shoot Mode/Drive).



- Check (✓) or uncheck to activate/deactivate.
- Select settings and register.

My Menu

Register the desired menu items to ★ (My Menu), selectable from the MENU list.



• Add Item

Up to 30 items (6 items per page, 5 pages max.) can be added to ★ (My Menu).

• Sort Item

The order and position of the items can be arranged as desired.

• Delete Item

Delete Items, Page or All.

Customizing the Fn (Function) button

Register frequently used functions to the Fn (function) button for fast access while shooting.



- MENU button - [2] 9 / 11
→ [Function Menu Set.]



- Up to 12 frequently used functions can be registered in both Still and Movie to the Fn (Function) button separately.

Customizing the Eye AF

The camera focuses on the subject's eyes while the button is held. In addition to half-pressing the shutter button or pressing the AF-On button, Eye AF can be activated by assigning to a selected button.*



- MENU button - [2] 9 / 11
(Custom Operation1) – Custom Key



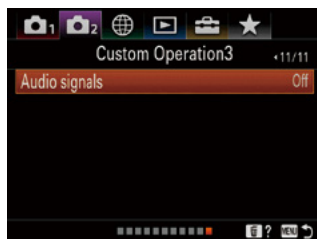
- Select a desired button, then assign the [Eye AF] function to that button.

* When activating Eye AF from a custom button, the subject is tracked over the full screen. Center button is assigned as a default in α9.

The electronic shutter* can be used in situations that require silence (no shutter sound).



- MENU button - [2] 5 / 11 – [Shutter Type] – [Electronic Shutter]



- MENU button - [2] 11 / 11 – [Audio signals] – [Off] or [On: other than e-shut]

* Shutter speeds slower than 1 / 8 sec. cannot be selected for continuous shooting. Tracking performance differs on settings and lenses.